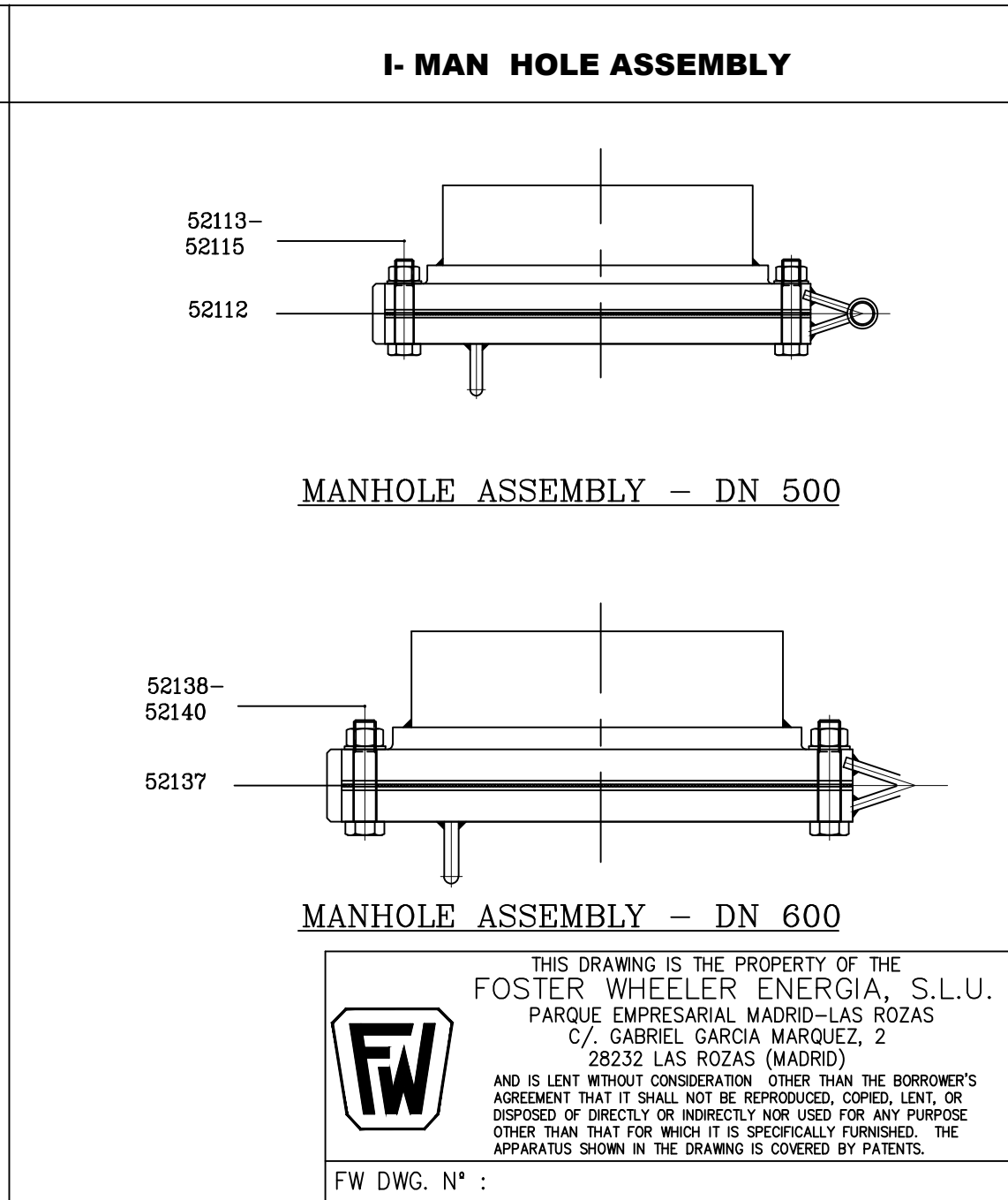
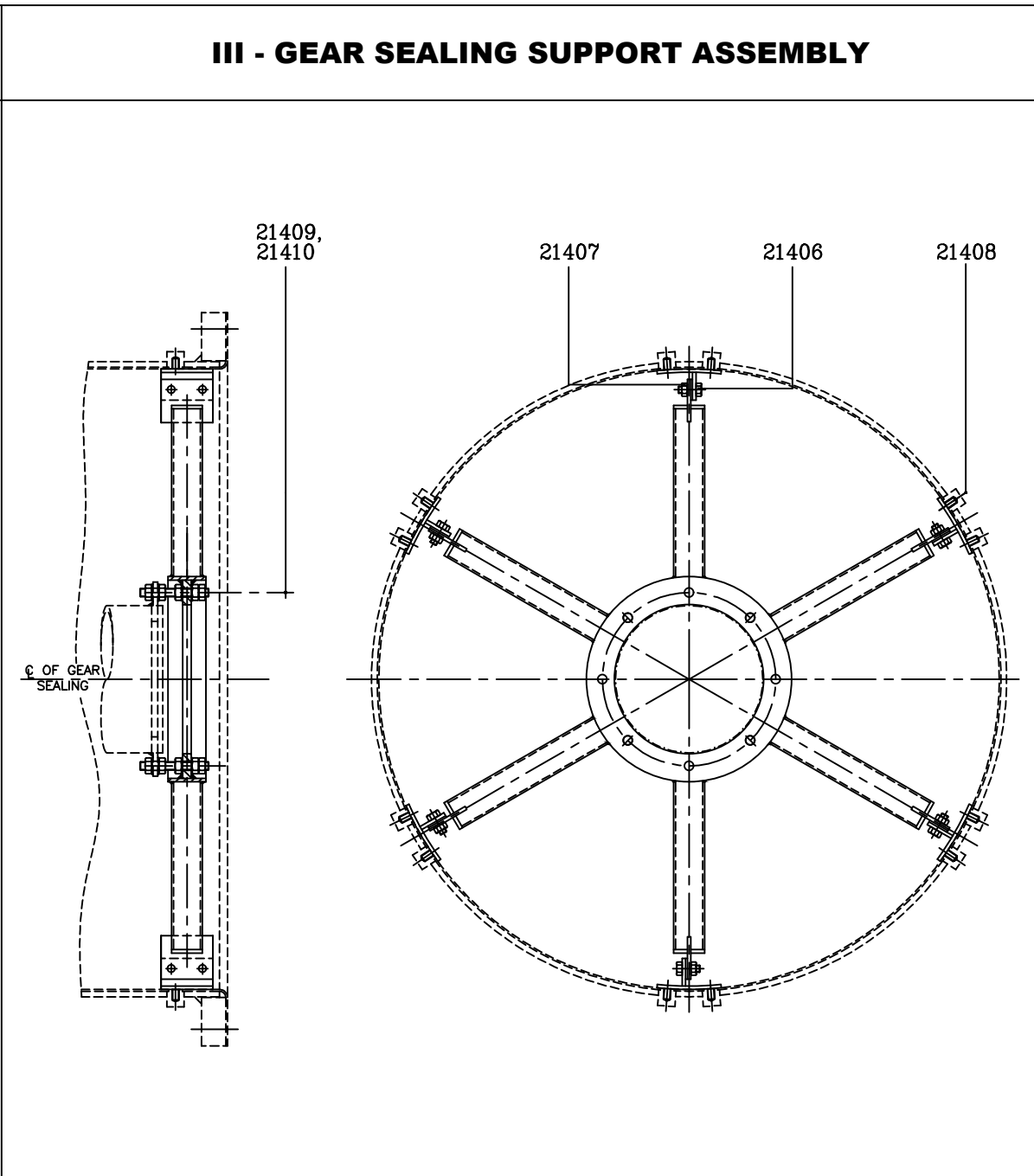
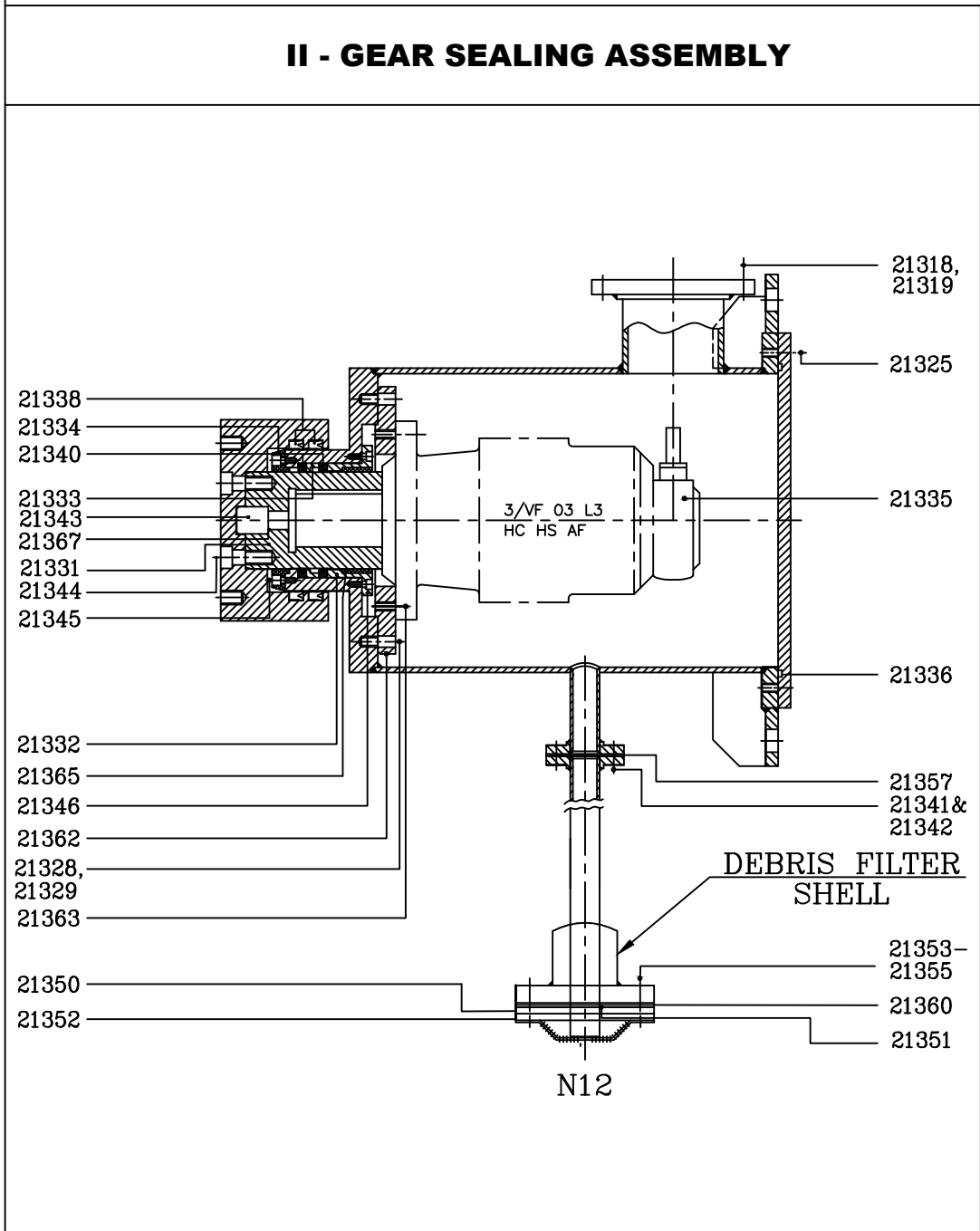


NOZZLE SCHEDULE				
NOZZLE MARK	SERVICE	SIZE	QTY	MATERIAL
N1	SHAFT CONNECTION TO GEARED MOTOR DRIVE	DN 100 x SCH.40	1	DUPLEX STEEL
N2	DEBRIS OUTLET	DN 250 x SCH.20	1	DUPLEX STEEL
N3	MAN HOLE - I	DN 500 x 10 TK	1	A 516 Gr 70(RL)
N4	BALL INJECTION PROVISION	DN 200 x SCH.40	1	A 106 Gr.B (RL)
N4	BALL INJECTION	DN 100 x SCH.40	1	DUPLEX STEEL
N6	D.P STUB PLUS	DN 25 x SCH.40	1	A 106 Gr.B (RL)
N7	D.P STUB MINUS	DN 25 x SCH.40	1	A 106 Gr.B (RL)
N8	VENT	DN 25 x SCH.40	1	A 106 Gr.B (RL)
N9	DRAIN	DN 50 x SCH.40	1	A 106 Gr.B (RL)
N10	CONTROL DRAIN	DN 25 x SCH.40	1	DUPLEX STEEL
N11	DRIVE SHAFT PROVISION	DN 200 x SCH.40	1	A 106 Gr.B (RL)
N12	CONTROL DRAIN PROVISION	DN 80 x SCH.40	1	A 106 Gr.B (RL)
N13	MAN HOLE - II	DN 600 x 10 TK	1	A 516 Gr 70(RL)

SPARE PARTS LIST				
SL No.	PART No.	DESCRIPTION	QTY / SYSTEM	MATERIAL SPECIFICATION
I - MANHOLE ASSEMBLY				
1	52112	GASKET	1	EPDM
2	52113	BOLT	20	CARBON STEEL
3	52114	NUT	20	CARBON STEEL
4	52115	WASHER	20	CARBON STEEL
5	52137	GASKET	1	EPDM
6	52138	BOLT	20	CARBON STEEL
7	52139	NUT	20	CARBON STEEL
8	52140	WASHER	20	CARBON STEEL

II - GEAR SEALING ASSEMBLY				
2	21318	BOLT	8	DUPLEX STEEL
3	21319	NUT	8	DUPLEX STEEL
4	21325	BOLT	12	DUPLEX STEEL
5	21328	STUD	8	A4
6	21329	NUT	8	A4
7	21331	SHAFT SLEEVE	1	DUPLEX STEEL
8	21332&21365	SEALING REAR SLEEVE WITH BUSH	1	DUPLEX&POLYACE C
9	21333	RING	1	DUPLEX STEEL
10	21334	SEALING FRONT BUSH	1	POLYACE C
11	21335	WORM PLANETARY GEARBOX	1	MAKE:BNFIGUOLI
12	21336	O-RING	1	---
13	21338	U SEAL	2	---
14	21340	SHAFT SEAL	2	---
15	21341	BOLT	4	DUPLEX STEEL
16	21342	NUT	4	DUPLEX STEEL
17	21343	HEX SOCKET HEAD CAP SCREW	1	DUPLEX STEEL
18	21344	HEX SOCKET HEAD CAP SCREW	6	DUPLEX STEEL
19	21345	HEX SOCKET HEAD CAP SCREW	6	DUPLEX STEEL
20	21346	HEX SOCKET HEAD CAP SCREW	8	DUPLEX STEEL
21	21350	CONTROL DRAIN FLANGE-1	1	DUPLEX STEEL
22	21351	O-RING	1	EPDM
23	21352	CONTROL DRAIN FLANGE-2	1	DUPLEX STEEL
24	21353	BOLT	4	CARBON STEEL
25	21354	NUT	4	CARBON STEEL
26	21355	WASHER	4	CARBON STEEL
27	21357	GASKET	1	EPDM
28	21360	GASKET	1	EPDM
29	21362	INTERMEDIATE FLANGE	1	STAINLESS STEEL
30	21363	BOLT	10	DUPLEX STEEL
31	21367	BUSH	1	NYLON

III - GEAR SEALING SUPPORT				
1	21406	BOLT	12	DUPLEX STEEL
2	21407	NUT	12	DUPLEX STEEL
3	21408	BOLT F.T	12	DUPLEX STEEL
4	21409	STUD	8	DUPLEX STEEL
5	21410	NUT	40	DUPLEX STEEL



OWNER

PETRO-VIETNAM

VIETNAM OIL AND GAS GROUP (PVN)

SUB-CONTRACTOR

FOSTER WHEELER

FUNCTION NAME SIGN DATE

DRAWN BY ---

CHECKED BY ---

APPROVED BY ---

DOCUMENT No. SCALE REV 0

PROJECT : YUNG ANG 1 THERMAL POWER PLANT 2 x 600MW

GIX / 2661 SH 01 OF 02 REV. 0

G.A. OF DEBRIS FILTER SPARE PARTS DETAILS (DN 1800)

DRAWN : AVINOTH DATE : 16.05.17

(A1) CHECKED APPROVED DATE

DESIGN T.ENYANKARTHIK S.SHANTHI 16.05.17

ENGG. R.PRAKASAM SARULPARI 16.05.17

PROJECT NO. : GBK/2845/2010 SCALE : ~

THIS TECHNICAL DOCUMENT IS THE PROPERTY OF GEA BGR AND PROTECTED IN ACCORDANCE WITH PREVAILING LAW.